



1204 1 Pan Peninsula Square, London, E14 9HD

**£330,000**



## 1204 1 Pan Peninsula Square, London, E14 9HD

**£330,000**

Nestled within the prestigious Pan Peninsula, this luxurious 1-bedroom apartment offers more than just a home; it's a gateway to an unparalleled living experience. Residents here enjoy a lifestyle of utmost convenience and indulgence, thanks to an impressive array of on-site amenities.

A 24-hour concierge service stands ready to cater to your every need, providing a level of convenience and security that is truly second to none. Need assistance or a reservation? The concierge is just a call away, ensuring your day-to-day life is hassle-free and well-organized.

Maintain a healthy and active lifestyle with the state-of-the-art fitness center, where you can exercise and stay in shape at your convenience. Additionally, there's a swimming pool that invites you to take a refreshing dip or unwind in style.

The business center provides a dedicated space for remote work or important meetings, making it effortless to balance your professional life while enjoying the comforts of home. For movie enthusiasts, the residents' cinema offers a cozy spot to enjoy your favorite films with friends and family.

Moreover, Pan Peninsula boasts local dining options and even a rooftop bar right on-site. Imagine savoring delectable meals and cocktails with unparalleled city views as your backdrop, all within the confines of your

## Description

Nestled within the prestigious Pan Peninsula, this luxurious 1-bedroom apartment offers more than just a home; it's a gateway to an unparalleled living experience. Residents here enjoy a lifestyle of utmost convenience and indulgence, thanks to an impressive array of on-site amenities.

A 24-hour concierge service stands ready to cater to your every need, providing a level of convenience and security that is truly second to none. Need assistance or a reservation? The concierge is just a call away, ensuring your day-to-day life is hassle-free and well-organized.

Maintain a healthy and active lifestyle with the state-of-the-art fitness center, where you can exercise and stay in shape at your convenience. Additionally, there's a swimming pool that invites you to take a refreshing dip or unwind in style.

The business center provides a dedicated space for remote work or important meetings, making it effortless to balance your professional life while enjoying the comforts of home. For movie enthusiasts, the residents' cinema offers a cozy spot to enjoy your favorite films with friends and family.

Moreover, Pan Peninsula boasts local dining options and even a rooftop bar right on-site. Imagine savoring delectable meals and cocktails with unparalleled city views as your backdrop, all within the confines of your very own residence.

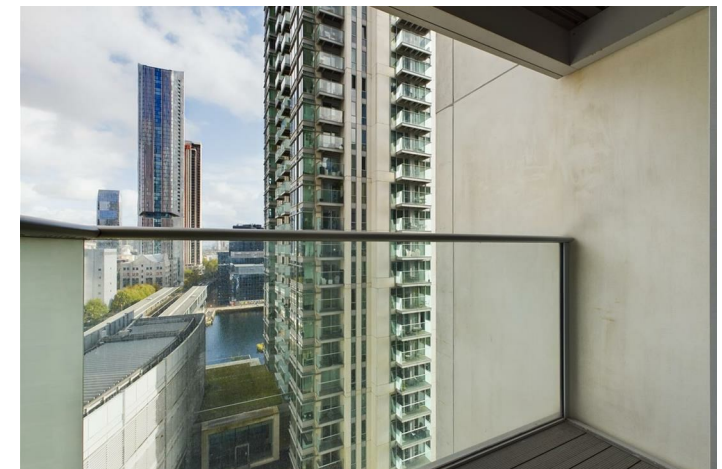
## Situation

This apartment is not just a place to live; it's a place to thrive. Combining these extraordinary on-site amenities with the apartment's breathtaking views and contemporary interiors, it offers a lifestyle that surpasses even the loftiest expectations. Don't miss the chance to make this your new home in one of Canary Wharf's most prestigious developments. Contact us today and embrace luxury, convenience, and spectacular views as part of your daily life.

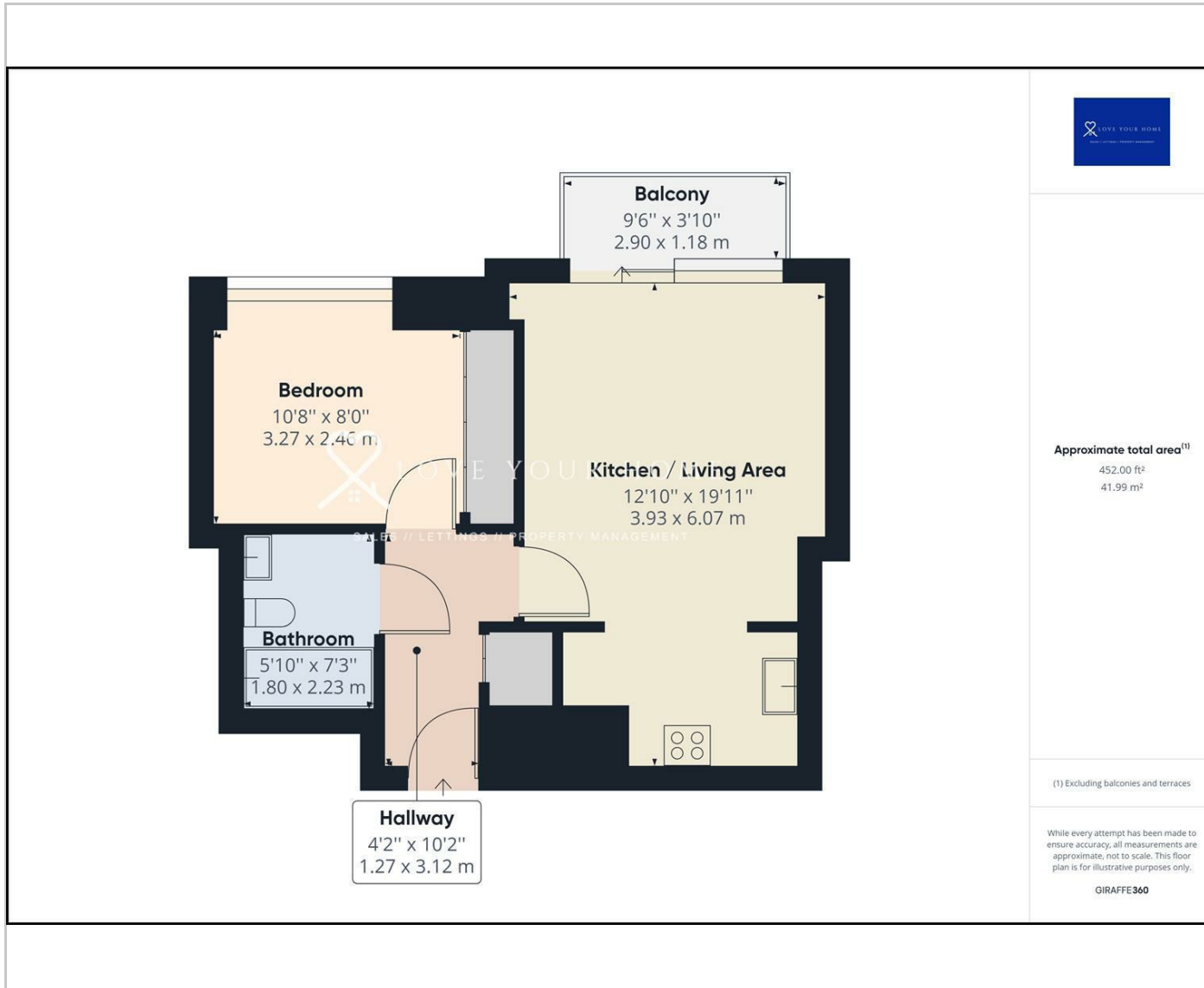
null

Council Tax Band: F

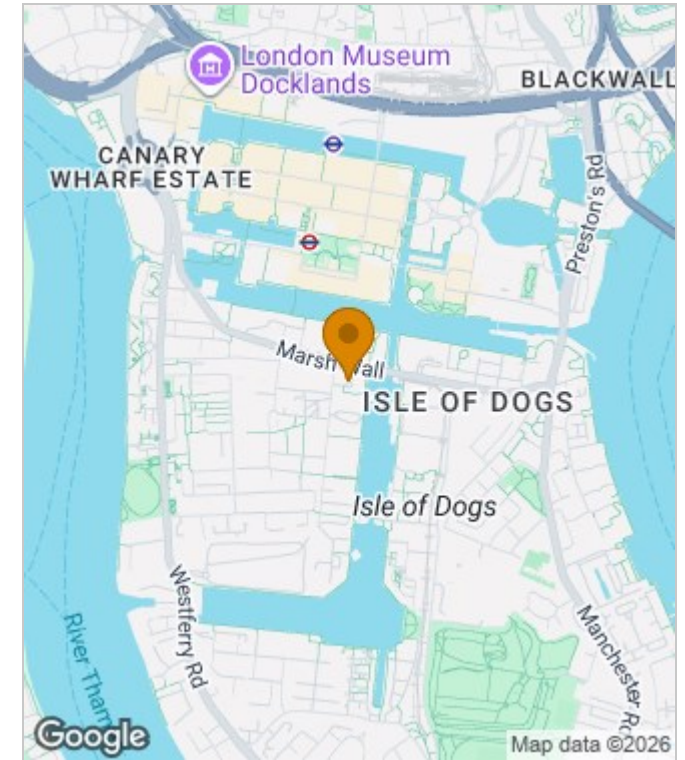
Available:



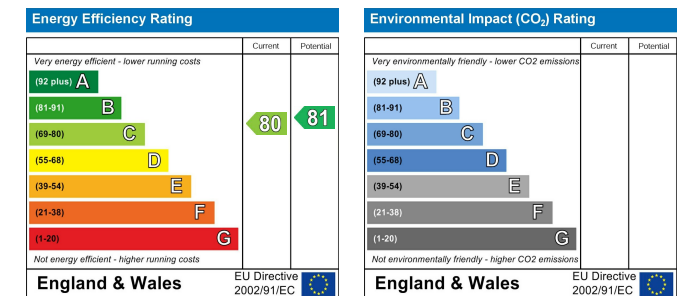
## Floor Plans



## Area Map



## Energy Performance Graph



These particulars, whilst believed to be accurate are set out as a general outline only for guidance and do not constitute any part of an offer or contract. Intending purchasers should not rely on them as statements of representation of fact, but must satisfy themselves by inspection or otherwise as to their accuracy. No person in this firm's employment has the authority to make or give any representation or warranty in respect of the property.

The Nucleus Brunel Way, Dartford, Kent, DA1 5GA

Tel: 02081758868 Email: [property@lyhpropertyconsultants.com](mailto:property@lyhpropertyconsultants.com) [www.lyhpropertyconsultants.com](http://www.lyhpropertyconsultants.com)